

Give *Thanks*

LAKE SHORE BAPTIST CHURCH | NOVEMBER 2024

Colossians 3:17

Thanksgiving Baskets

Provide a meal for
a family in need!
Sign up for items
in the main lobby!

Donations
Due: Nov. 24th

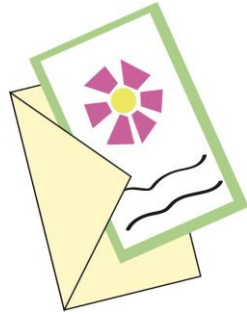
Upcoming Events

- Nov 9th – Shoebox Packing Open House, 10a-2p
- Nov 9th – Blessing Boutique, 10a-1p
- Nov 10th – Baptism Sunday
- Nov 13th – Young @ Heart, 12p
- Nov 17th – Bible Basics Class, 9:45a
- Nov 17th – Gratitude & Fellowship Potluck, 6p
- Nov 18th – LS Women's Ministry Outreach, 6:30p
- Nov 19th – Grace & Hope Mission, 7p
- Nov 24th – Thanksgiving Basket Items due
- Nov 24th – OCC shoeboxes due
- Nov 28th – *Happy Thanksgiving!*

Young @ Heart 55+ ministry

Meetings held 2nd Wednesdays @ 12pm.
BYO Lunch, Presentations, Group Study,
Mission Projects, and more! **Next Meeting:**
Nov 13th, 12pm

This month, we will be learning how to make cards for \$2 a piece. We will also be signing cards for Servants of Jesus to distribute to the homeless.



Gratitude & Fellowship

Potluck



November 17 | 6pm

Sign up @ the Next Steps Center!

Please bring a main dish, side, appetizer, or dessert.
Join us for Trivia after dinner!

Bring a small jar of peanut butter to support **Servant's of Jesus** or a cookie mix to support the **Women's Ministry Dec. outreach.**

Our Blessing Boutique will be open again on Nov 9th, 10am-1pm.

This **free** kids clothing closet is open to the public the 2nd Saturday of each month to provide clothes, shoes, and accessories to our community. Drop off new and gently used donations of clothes, shoes, & accessories (no toys), at the Collection Center on Sunday mornings or during office hours, Mon-Thurs. 9:30am-3:30pm. Label donations "Blessing Boutique."



Baptism Sunday

November 10

Sign up @ the Next Steps Center!

Have Questions?

Talk to a pastor today!

CARING CUPBOARD Hygiene Item Collection

Monday | November 18th
Fellowship Hall | 6:30PM

For our November service Project, The Lake Shore Women's Ministry will meet for a time of fellowship and to pray over the hygiene items we collect for Caring Cupboard. *If you'd like to help by donating items, you can find the list of items needed and sign up online @ LakeShoreBaptist.org.* **Drop off items at the collection center through Sunday, Nov. 17th!**

Questions? Contact Amanda Johnson, 443-994-7113



GRACE & HOPE MISSION

Nov. 19th @ 7pm

Join us for a special service in Baltimore!
Meet us there or join our carpool from Green Valley Marketplace on

Edwin Raynor @ 6:30pm.

Drop off individually wrapped sandwiches & cookies @ LSBC by 3:30pm.



OPERATION CHRISTMAS CHILD

SHOEBOX DONATIONS

Boxes are available in the lobby. Please drop off filled shoeboxes by Nov. 24th, 2024. Full packing list & Operation Christmas Child info can be found online @ samaritanspurse.org/operation-christmas-child Drop off donations @ the Collection Center

**You can also help with shipping costs by designating your online giving to "OCC"*



COLLECTION WEEK

We need volunteers to help during OCC Collection Week – **November 18-25, 2024**. Day and evening shifts available. **Sign up at the Next Steps Center!** Talk to Margo or Amy Davis for more info. **Sign up online by clicking the OCC banner!**

PACKING OPEN HOUSE

November 9 from 10:00 - 2:00

You can help setup or pack shoeboxes. This will run concurrently with the

Blessing Boutique, and we'll give those families an opportunity to pack shoeboxes. We are collecting items: **toothbrushes, school supplies, stickers, small toys and stuffed animals**

PROCESSING CENTER TRIPS

Join us for a shift @ the Baltimore Processing Center in Elkridge. Limited spots available for each time slot. Volunteers must be 13+. **Sign up online by clicking the OCC banner!**

Have you heard of Servants of Jesus?

Formerly known as Helping Hands Feeding Ministry, it's one of our community ministry opportunities, led by George & Laura Ridley. Each week, they and several volunteers spend time in Brooklyn Park providing meals and supplies to people in need. Each month we highlight requested item to be distributed and appreciate the great generosity you have already shown in previous collections! If you would like to participate on Thursdays, contact them directly at helpinghands@lakeshorebaptist.org.

Nov. Item: Healthy Cereal, 10-12 oz Boxes

Drop off all items @ the Collection Center.



Sunday School and Bible Fellowship Classes | Classes are at 9:45am

Sunday School for Infant – 5th Grade

Bible Fellowship Classes for Students (6th – 12th Grade)

Bible Fellowship Classes for Adults:

- **Explore the Bible: Acts 13-28**
 - **Tim Birdsall (Annex A1)**
 - **Tracy Bolt (Room C1)**
- **Answers Bible Curriculum**
 - **Steve Schwartz (Annex A2)**
- **Bible Studies for Life: Living on Purpose; Navigating Family Conflict**
 - **Wayne Foy (Annex A3)**
- **Revelation**
 - **Rich Jones, Jr. (Annex A7)**
- **MasterWork: Essential Messages from God's Servants**
 - **Bonnie Summers (Admin Wing)**
- **Major Stories of the Bible**
 - **Jason Bland (Fellowship Hall)**

Cory Atkinson, Senior Pastor
catkinson@lakeshorebaptist.org

Ed Blizzard, Executive Pastor
eblizzard@lakeshorebaptist.org

Margo Schwartz,
Director of Children's Ministry
mschwartz@lakeshorebaptist.org

Amy Jones,
Director of Student Ministry
ajones@lakeshorebaptist.org

Alicia de la Garza,
Director of Music & Worship
adelagarza@lakeshorebaptist.org

Brenda Fahey, Office Administrator
bfahey@lakeshorebaptist.org

Katie Ekovich, Multimedia Coordinator
kekovich@lakeshorebaptist.org

lake+shore

BAPTIST CHURCH

Physical Address:

4613 Mountain Rd. | Pasadena, MD 21122

Mailing address:

P.O. Box 146 | Pasadena, MD 21123

410-255-5413 | office@lakeshorebaptist.org

LakeShoreBaptist.org

Visiting with us today? Stop by the
Connection Center in the main lobby and fill out
a Connection Card. We'd love to meet you!

Thank you for your contributions!

Services

Sundays @ 8:30 & 11am
Sunday School & Bible
Fellowship Classes (*all ages*)
@ 9:45am

Year to Date 2024

Budget Requested	\$594,905.00
Received	\$548,842.73
Actual Spent	\$573,168.00

Wifi

worship center 2021
Password: welcome1
Facebook.com/LSBCpasadena

5 WAYS TO GIVE

Thank you for your generosity!



In person (*giving boxes @ the
back of the Worship Center and
@ the Connection Center*)



Through your bank (*via bill pay*)



By Mail (*Send a check to
P.O. Box 146 Pasadena, MD 21123*)



Online (*Go to LakeShoreBaptist.org
and click the giving tab*)



Or scan the QR code

lake+shore

BAPTIST CHURCH

SMART connect

New to LSBC?

*Use the QR code to
connect with us...*



SCAN ME

Thanks for connecting with the Lake Shore Family!